



- * FOUR BEDROOM FAMILY HOME * OPEN PLAN KITCHEN/DINING ROOM *
- * LIVING ROOM * LARGE REAR GARDEN *
- * AMPLE OFF ROAD PARKING WITH EV CHARGER *
- * LARGE MASTER BEDROOM IN LOFT CONVERSION * TWO BATHROOMS *
- * CLOSE TO BEXLEYHEATH TRAIN STATION * LOCATED IN A QUIET CLOSE *
- * CLOSE TO LOCAL SCHOOLS, SHOPS AND AMENITIES *



7 Orchard Close
Bexleyheath, DA7 4RP

£650,000

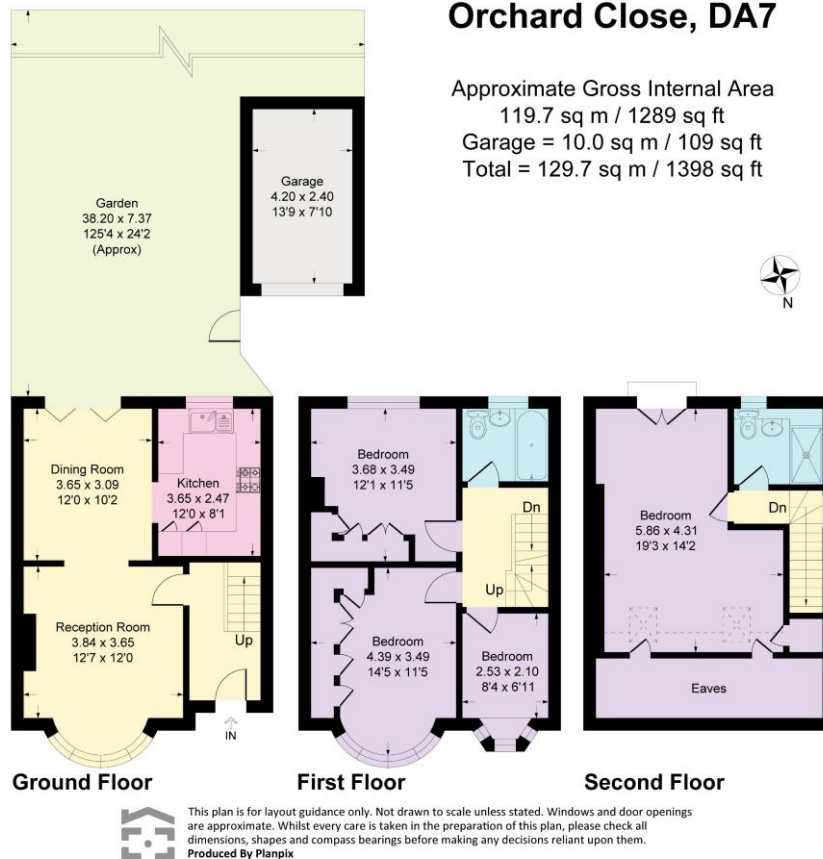
Nestled in the tranquil setting of Orchard Close, Bexleyheath, this superbly presented four-bedroom semi-detached house seamlessly blends stylish living with modern convenience. Recently enhanced throughout, the home boasts an immaculate finish complemented by contemporary décor, perfect for families seeking comfort and sophistication. Internal viewing comes highly recommended...



EPC RATING D
COUNCIL TAX BAND E

Orchard Close, DA7

Approximate Gross Internal Area
119.7 sq m / 1289 sq ft
Garage = 10.0 sq m / 109 sq ft
Total = 129.7 sq m / 1398 sq ft



We understand this property is Freehold.

VIEWING:

Via **Village Estates** on 01322 522111
Monday to Friday 9am-6pm, Saturday 9am-5pm

SELLING YOUR HOME?

If you are thinking of selling your own property, **VILLAGE ESTATES** will be pleased to provide you with a free market appraisal for sale purposes and professional marketing advice **FREE OF CHARGE, WITHOUT OBLIGATION**. Call one of our experienced sales staff on 01322 522111.

Whilst we endeavour to make our sales details reliable and accurate they should not be relied on as representations or statements of fact, and do not form any part of an offer or contract. The Seller does not make or give nor do we or our employees have authority to make or give any representation or warranty in relation to the property. We would strongly recommend that all the information which we provide about the property is verified by yourself on inspection and also by your conveyancer, especially where statements have been made by us to the effect that the information provided has not been verified. If there are any other points which are of particular importance to you, we would be only too happy to check the information and indeed confirm the availability of the property. Please contact the above office to arrange a convenient viewing appointment.